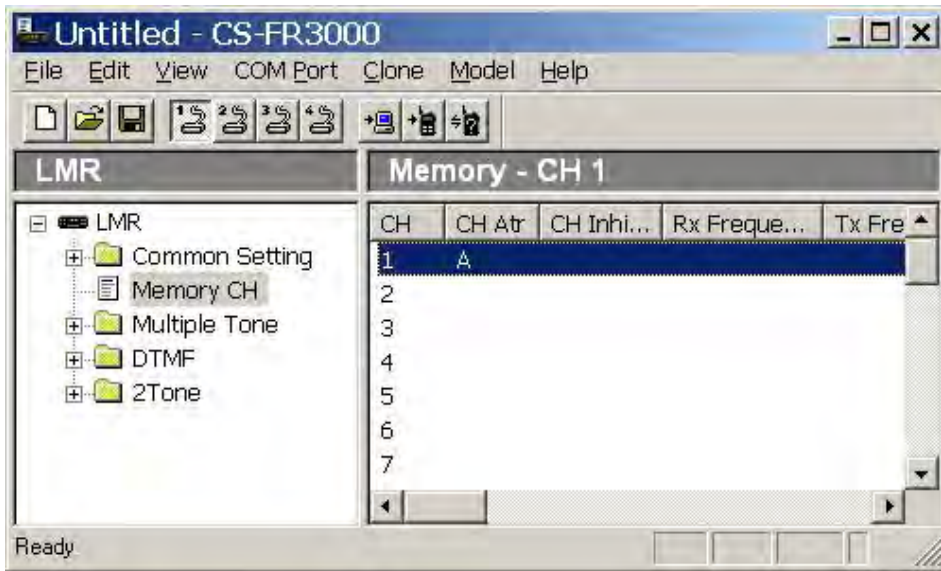
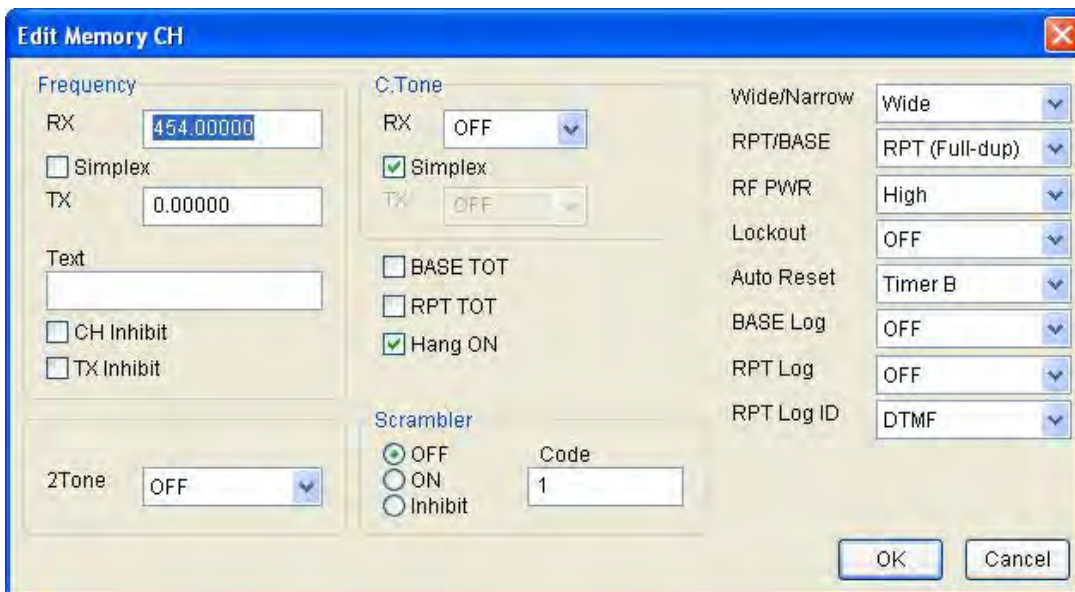


How do I set up CWID on my FR3000/4000?

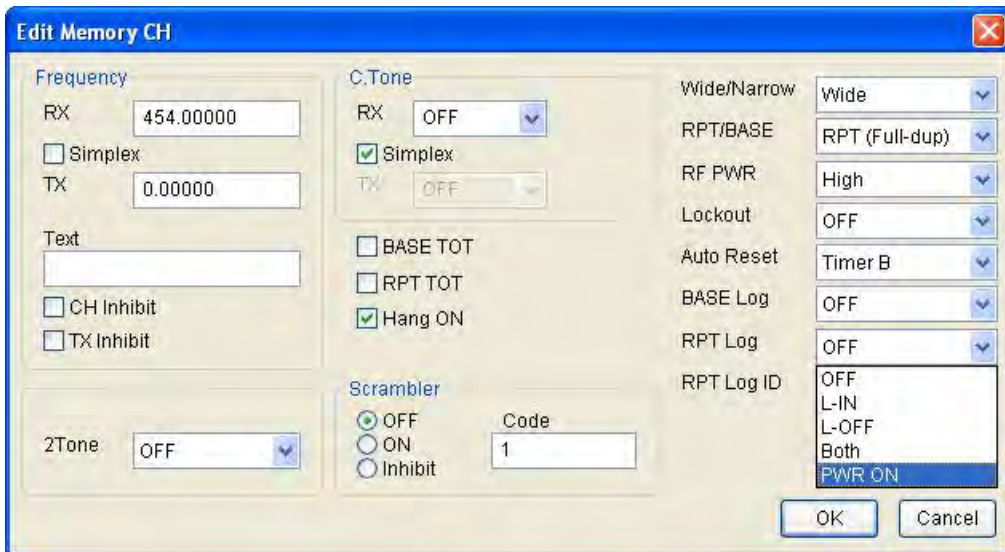
1. Open the CS-FR3000 cloning software.



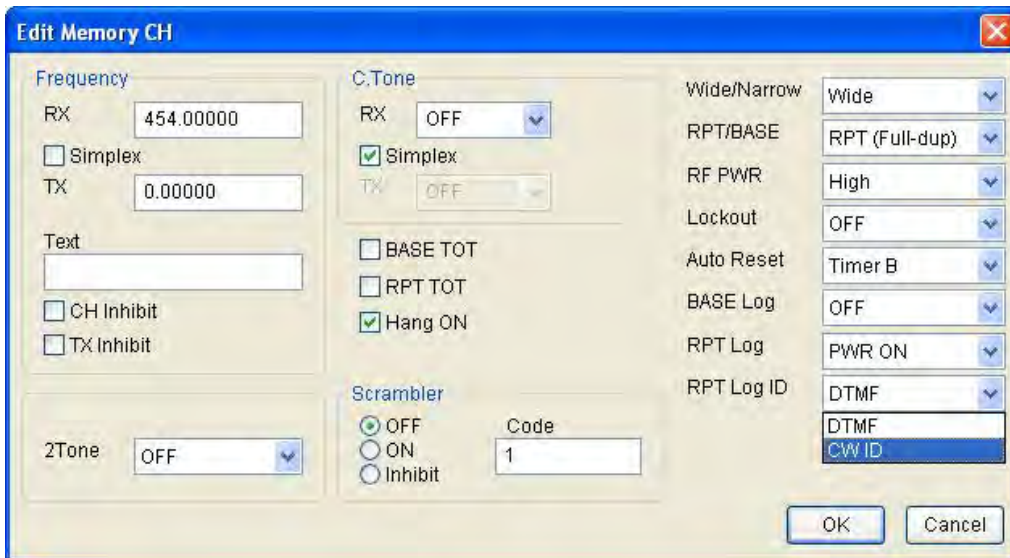
2. Select **Memory CH**. Double-click anywhere in the **Memory – CH** field (to the right of the tree menu). The following screen appears.



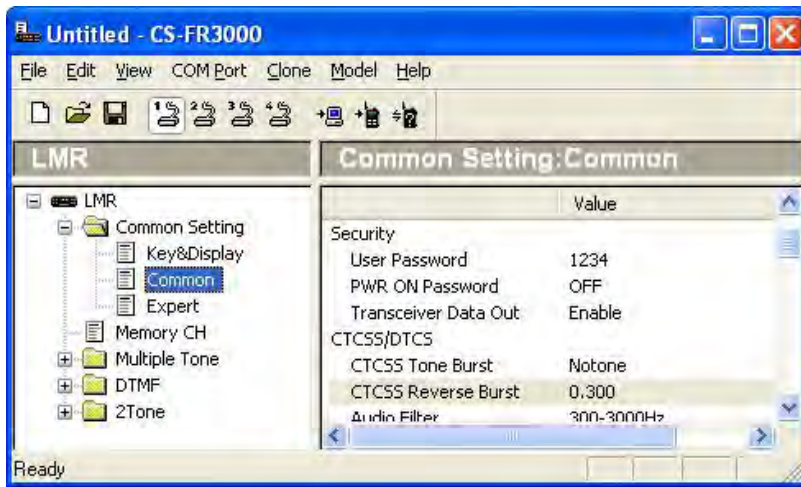
3. Enter the RX frequency of your repeater and press **Enter** on your keyboard. In the **RPT Log** field, select **PWR ON**.



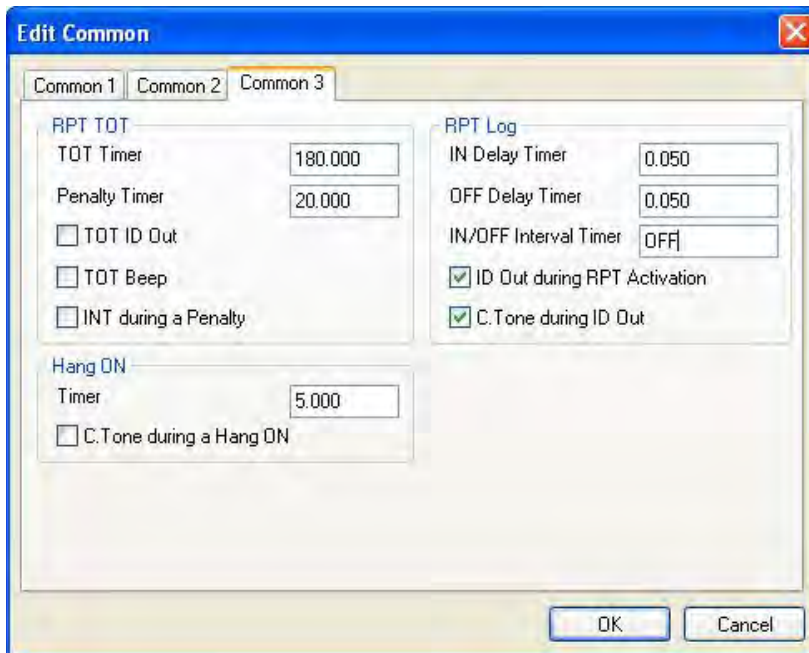
4. In the **RPT Log ID** field, select **CWID**.



5. Click **Common** under the **Common Settings** folder.



6. Double-click anywhere in the **Common Setting: Common** field (to the right of the tree menu). The **Edit Common** screen appears. Click the **Common 3** tab.



7. Change the **IN/OFF Interval Timer** to the desired interval between CWID transmissions, (in seconds). For example, 600 seconds is a 10 minute interval.

Note: Be sure to consider how the **ID Out during RPT Activation** check box is set.

- If selected: if you are transmitting when the CWID timer goes off, the voice is pre-empted and all you hear is the CWID.
- If unselected: If you are transmitting when the CWID timer goes off, the CWID waits until you finish your voice TX, then the CWID starts transmitting.

8. Click **Expert** under the **Common Setting** folder.



9. Double-click anywhere in the **Common Setting: Expert** field (to the right of the tree menu). The **Edit Expert** screen appears.



10. Enter your ID text in the **Code** field. This ID will then be transmitted in CW.